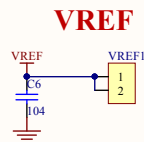
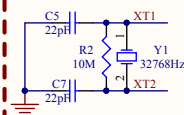


電源線路



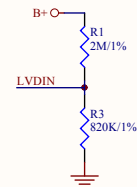
ADC外部參考電壓



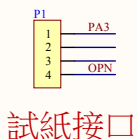
RTC



Crystal

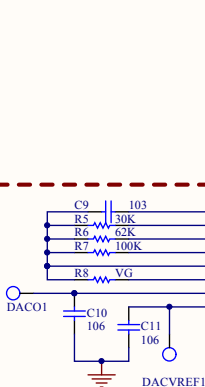


低電壓檢測

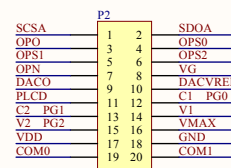
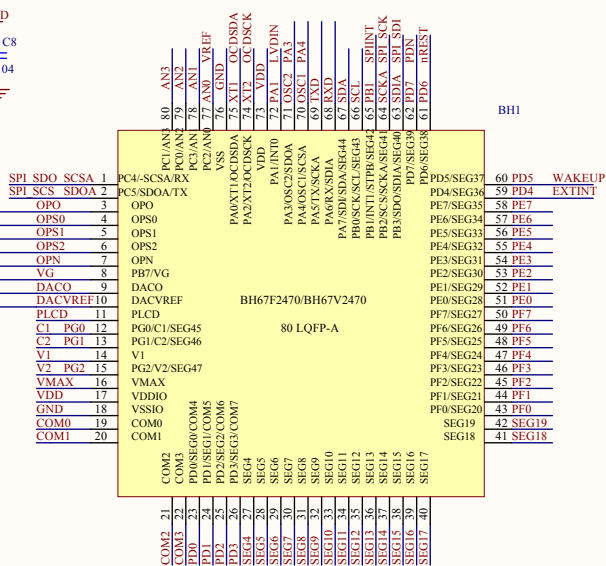
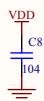
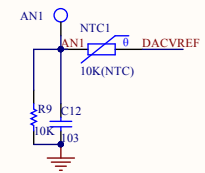


試紙接口

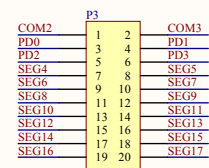
量測電路



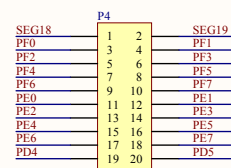
NTC電路



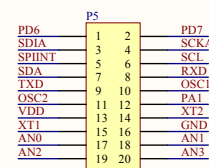
Header 10X2



Header 10X2

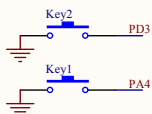


Header 10X2

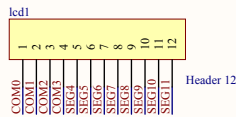


Header 10X2

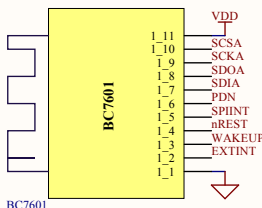
按鍵電路



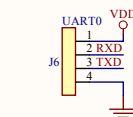
LCD



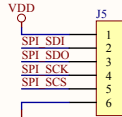
BLE



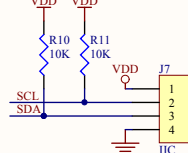
UART



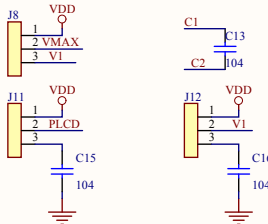
SPI接口



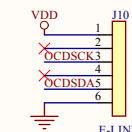
IIC接口

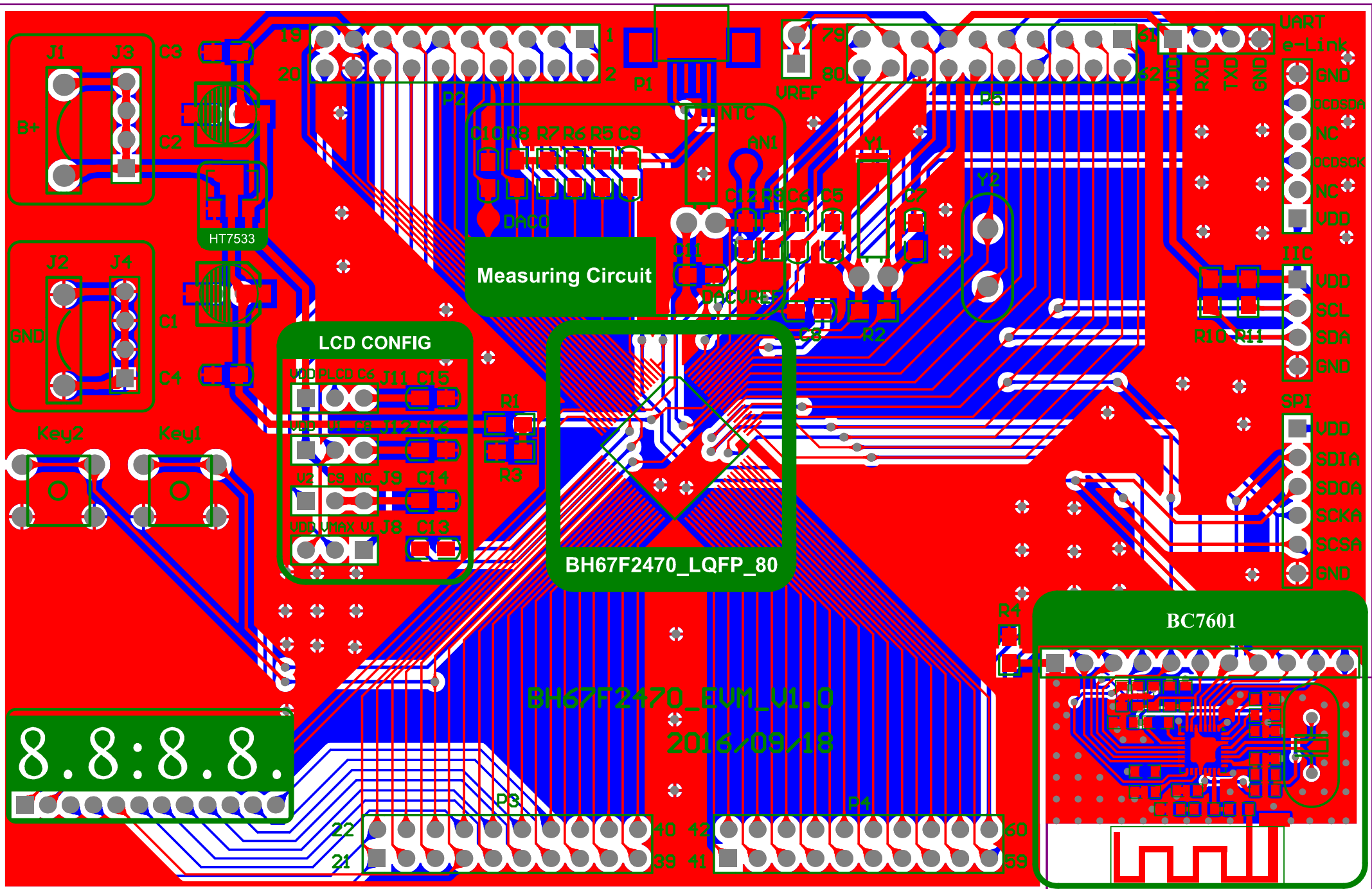


LCD配置



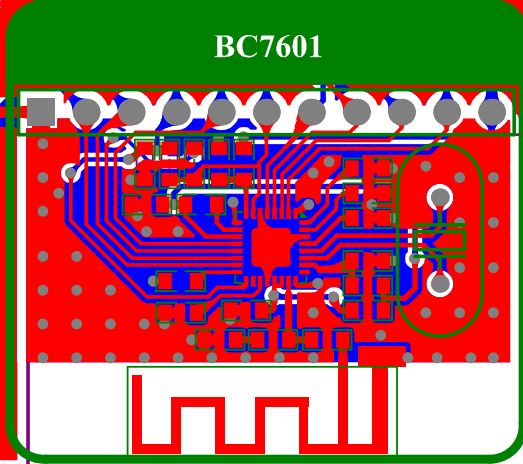
OCDS接口





8.8:8.8

BH67F2470_EUM_V1.0
2016-09-18



Comment	Description	Designator	Footprint	LibRef	Quantity
TP		AN1, DACO1, DACVREF1	TEST	TP	3
BC7601		BC1	BC7601-1	BC7601	1
BH67		BH1	LQFP_80	BH67F2470	1
Cap2	Capacitor	C1, C2	7275-hole	Cap2	2
Cap	Capacitor	C3, C4, C5, C6, C7, C8, C9, C10, C11, C12, C13, C14, C15, C16	0805C	Cap	14
HT7533		HT7533	SOT-89	HT7133	1
B+	Header, 2-Pin	J1	CLIP POWER PIN	Header 2_Power	1
GND	Header, 2-Pin	J2	CLIP POWER PIN	Header 2_Power	1
B+		J3	HDR1X4	J_4	1
GND		J4	HDR1X4	J_4	1
SPI	Header, 6-Pin	J5	HDR1X6	Header 6	1
UART0		J6	HDR1X4	J_4	1
IIC	Header, 4-Pin	J7	HDR1X4	Header 4	1
J_3_Dup1		J8, J9, J11, J12	HDR1X3	J_3_Dup1	4
E-LINK		J10	HDR1X6	J_6	1
SW-PB	Switch	Key1, Key2	AN66	SW-PB	2
Header 12	Header, 12-Pin	lcd1	HDR1X12	Header 12	1
10K(NTC)		NTC1	32768(100MIL)	NTC	1
Header 4	Header, 4-Pin	P1	FPC_4PIN	Header 4	1
Header 10X2	Header, 10-Pin, Dual row	P2, P3, P4, P5	HDR2X10	Header 10X2	4
Res3	Resistor	R1, R2, R3, R4, R10, R11	0805R	Res3	6
Res2	Resistor	R5, R6, R7, R8	0805R	Res2	4
Res1	Resistor	R9	0805R	Res1	1
Header 2	Header, 2-Pin	VREF1	HDR1X2	Header 2	1
32768Hz	Crystal Oscillator	Y1	32768(100MIL)	XTAL	1
8MHz	Crystal Oscillator	Y2	XTAL	XTAL	1