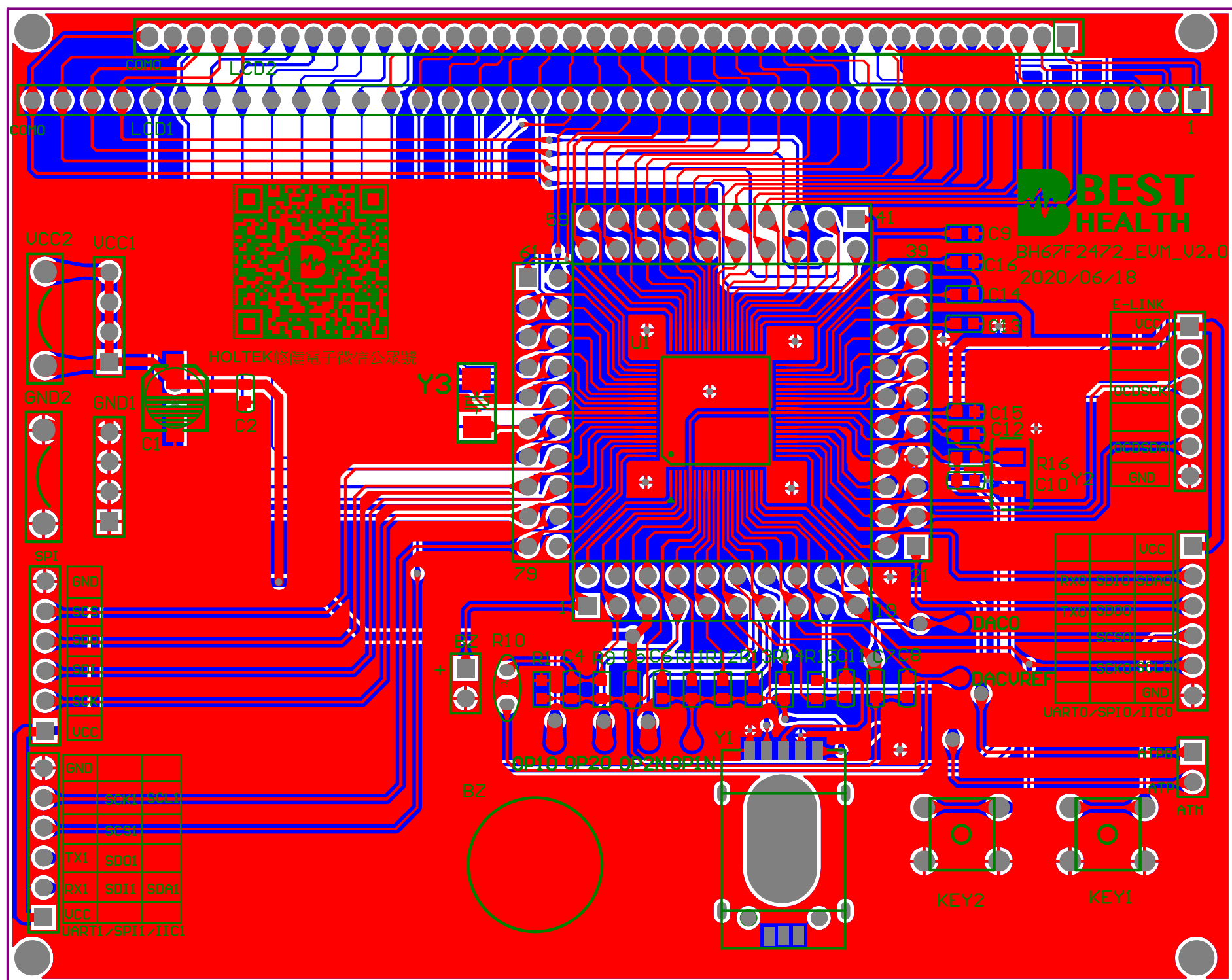


Title:	Glucometer
Revision:	BH67F2472-EVM-V2.0
Drawn By:	Iris
Data:	2020/6/18



Comment	Description	Designator	Footprint	LibRef	Quantity
BUZZER	Electrical Bell	BZ	BAT-2	Bell	1
10uF	Capacitor	C1	7275-hole	ECAP	1
104	Capacitor	C2, C5, C9, C13, C14, C15, C16	0603C	Cap	7
103	Capacitor	C4, C6, C11	0603C	Cap	3
106	Capacitor	C7, C8	0603C	Cap	2
10pF	Capacitor	C10	0603C	Cap	1
20pF	Capacitor	C12	0603C	Cap	1
SW-PB	Switch	KEY1, KEY2	AN66	SW-PB	2
ATM		P5	HDR1X2	HEADER2	1
0	Resistor	R1	0603R	Res1	1
50K	Resistor	R9	0603R	Res1	1
50K(NTC)		R10	NTC	NTC	1
39K	Resistor	R11	0603R	Res1	1
56K	Resistor	R12	0603R	Res1	1
100K	Resistor	R13, R15	0603R	Res1	2
NC	Resistor	R14	0603R	Res1	1
10M	Resistor	R16	0603R	Res1	1
TEST POINT		TP1, TP2, TP3, TP4, TP5, TP6	Test Point	TP	6
BH67F2472		U1	LQFP_80	HT45F68	1
TEST_STRIP		Y1	TEST_STRIP	TEST_STRIP	1
32.768K	Crystal Oscillator	Y2		XTAL	1
8M	Crystal Oscillator	Y3	XTAL-5032-2P	XTAL	1