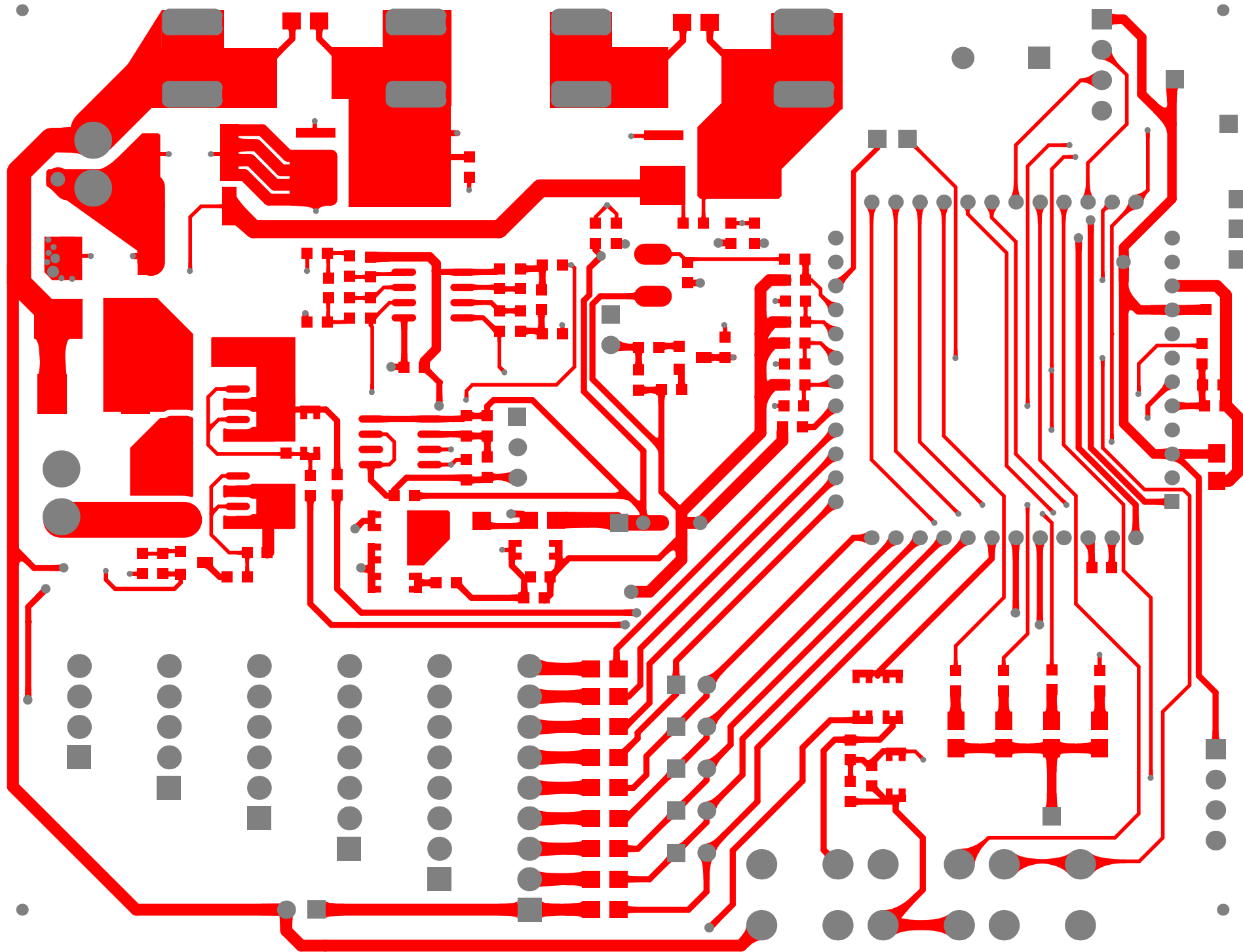
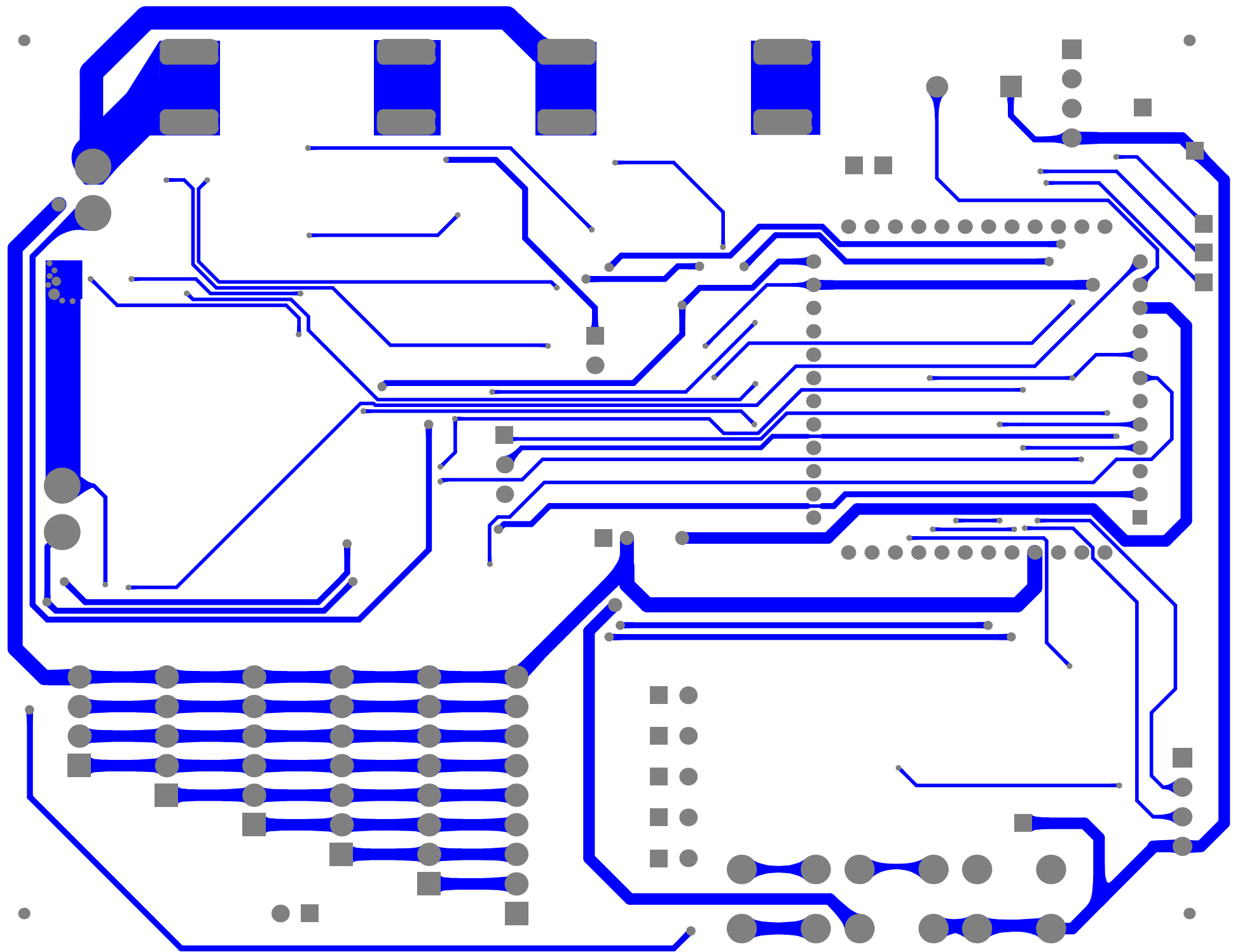
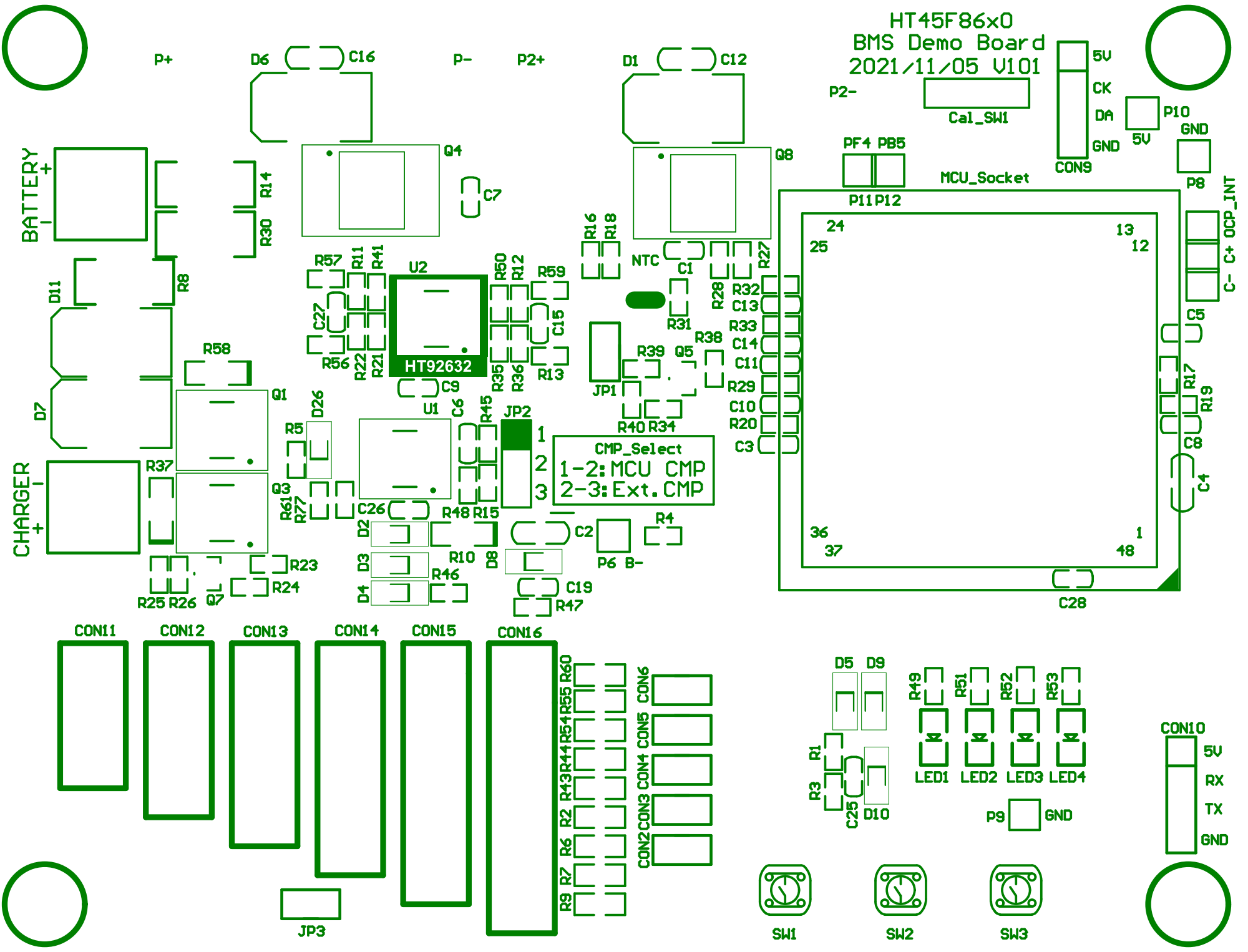


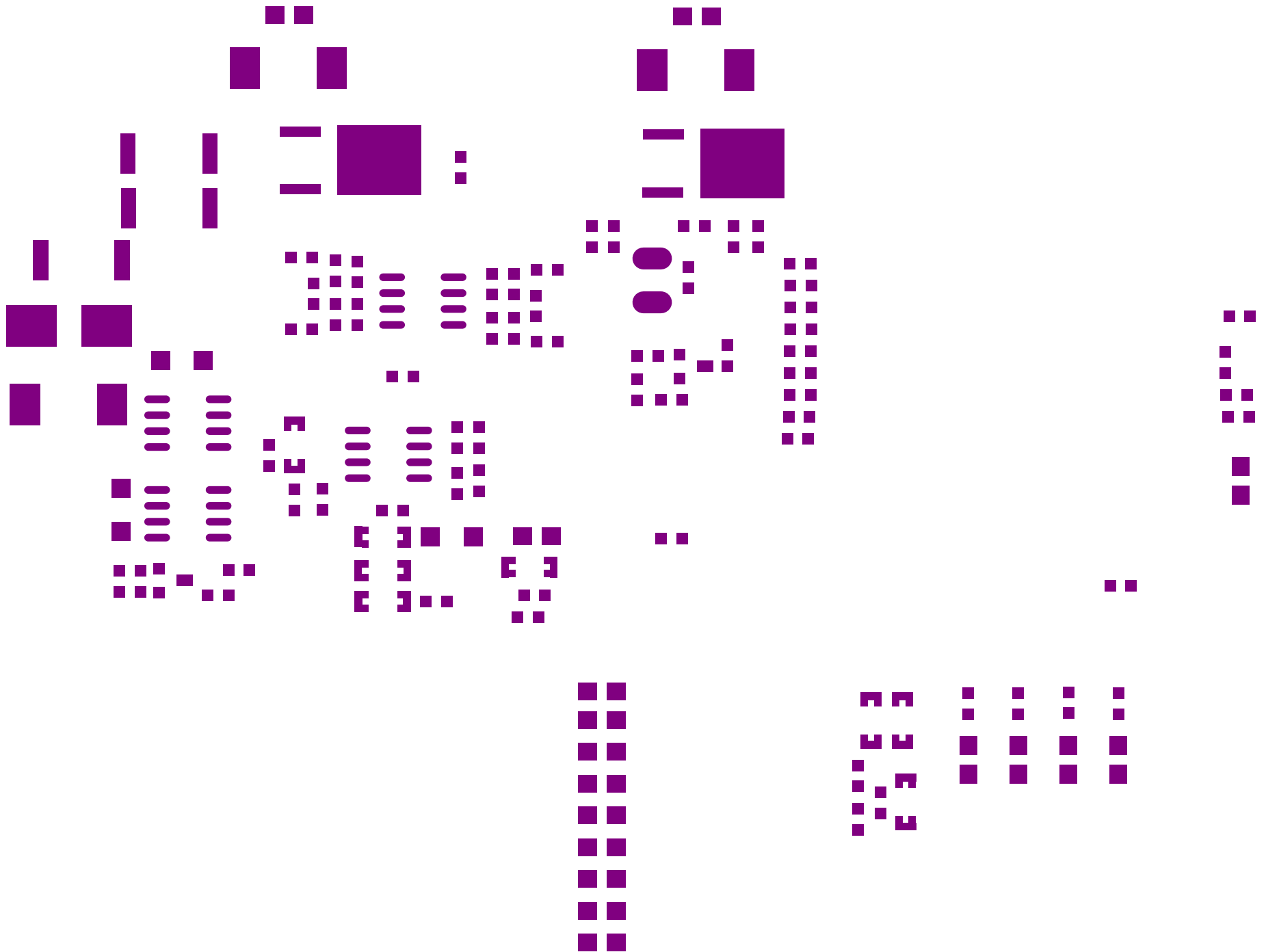
Title		BMS Demo Board HT45F86a0	
Size	Number	Revision	
A2	V101	V101	
Date:	2023/2/21	Sheet:	of
File:	C:\Users\...HT45F86a0_DemoMotherboard	Sheet:	of

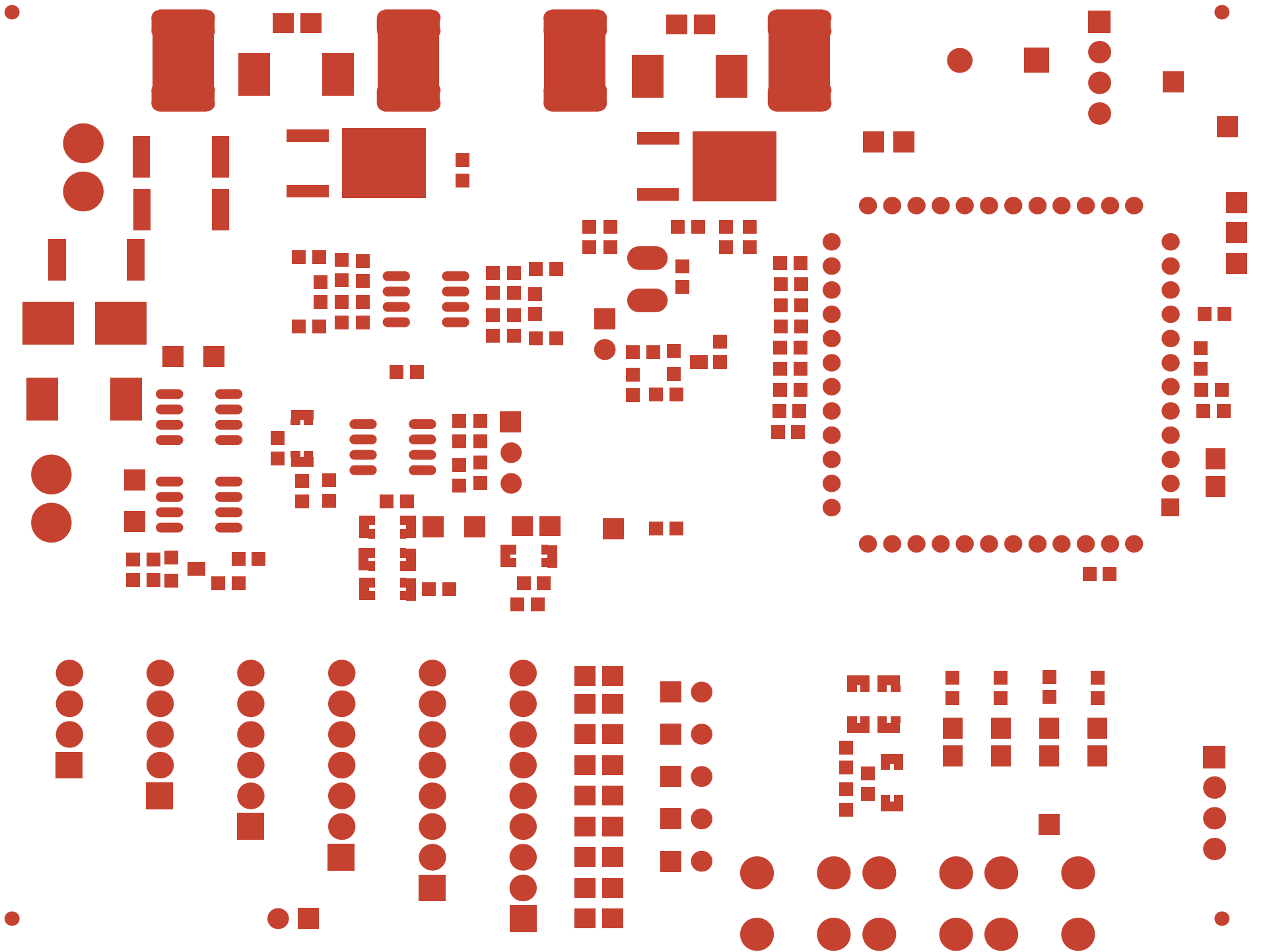




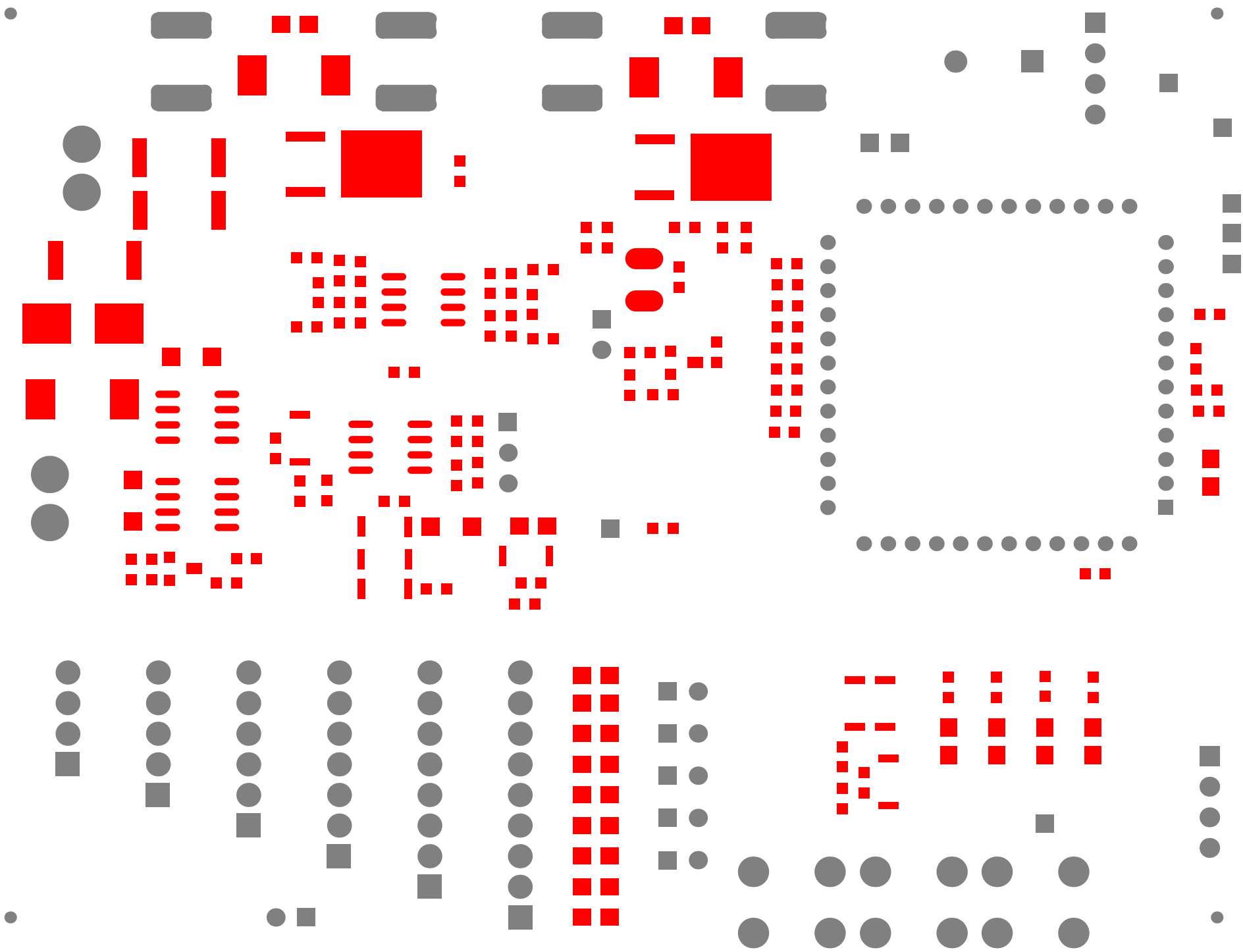
HT45F86x0  
BMS Demo Board  
2021/11/05 V101

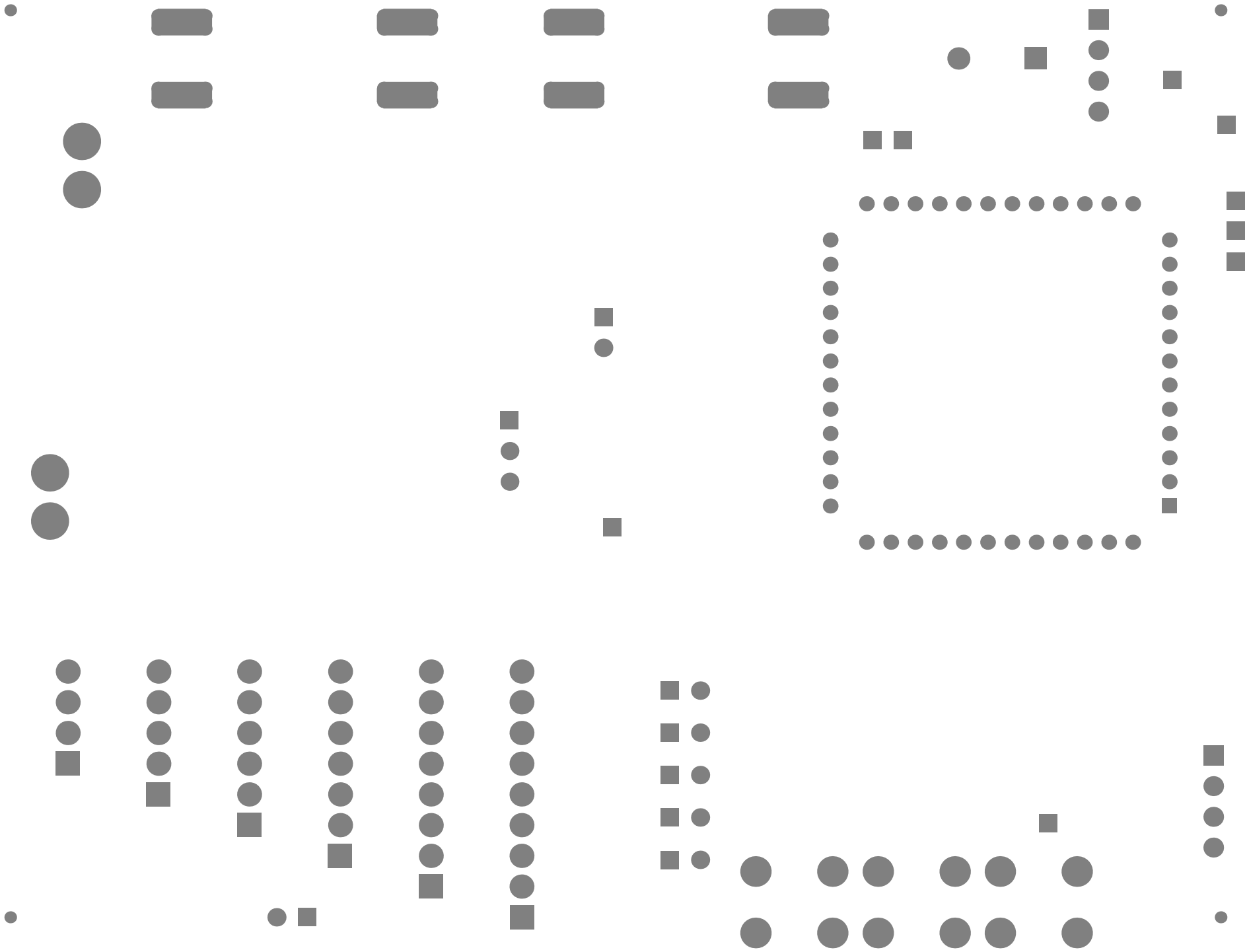




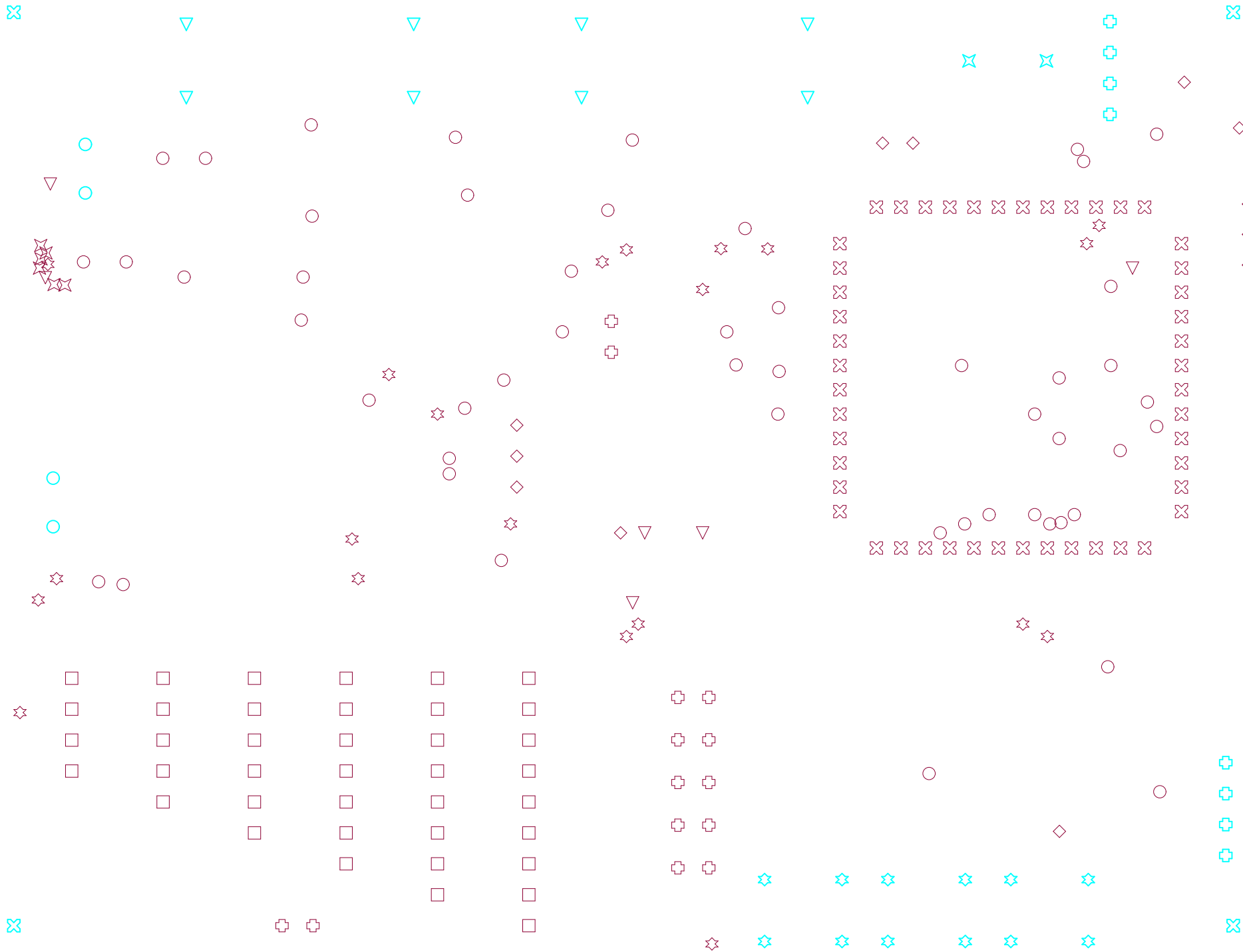














Comment	Description	Designator	Footprint	LibRef	Quantity
1N4148	1 Amp Fast Recovery Rectifier	D2, D3, D4, D5, D9	*DIO_LL4148_LL414	Diode	5
4.7V	Zener Diode	D10	*DIO_LL4148_LL414	D Zener	1
5.1V	Zener Diode	D8	*DIO_LL4148_LL414	D Zener	1
NC	Zener Diode 15V	D26	*DIO_LL4148_LL414	D Zener	1
0.1uF	Capacitor	C5, C6, C8, C9, C10, C11, C13, C14,	0603C	Cap	11
2.2nF	Capacitor	C3	0603C	Cap	1
22nF	Capacitor	C28	0603C	Cap	1
NC	Capacitor	C1, C7, C15, C27	0603C	Cap	4
0R	Resistor	R4, R13, R56, R57, R59, R77	0603R	Res1	6
100k	Resistor	R23, R24, R31, R46	0603R	Res1	4
100k 1%	Resistor	R21, R35, R41, R50	0603R	Res1	4
100R	Resistor	R61	0603R	Res1	1
10k	Resistor	R20, R29, R32, R33, R34, R48	0603R	Res1	6
10k 1%	Resistor	R11, R22	0603R	Res1	2
10R	Resistor	R25	0603R	Res1	1
16k	Resistor	R45	0603R	Res1	1
1M	Resistor	R5, R15, R17, R38, R39, R40	0603R	Res1	6
20k	Resistor	R19	0603R	Res1	1
22k	Resistor	R1, R3	0603R	Res1	2
2k 1%	Resistor	R12, R36	0603R	Res1	2
300k	Resistor	R16, R26, R28	0603R	Res1	3
5.1k	Resistor	R47	0603R	Res1	1
510R	Resistor	R18, R27	0603R	Res1	2
620R	Resistor	R49, R51, R52, R53	0603R	Res1	4
0.1uF	Capacitor	C12, C16	0805C	Cap	2
4.7uF/50V	Capacitor	C2, C4	0805C	Cap	2
100R/0805	Resistor	R2, R6, R7, R9, R43, R44, R54, R55,	0805R	Res1	9
200R/1206	Resistor	R10	1206	Res1	1
NC	Resistor	R37, R58	1206	Res1	2
50mR/2512	Resistor	R8, R30	2512R	Res1	2
5mR/2512	Resistor	R14	2512R	Res1	1
PACK		P2+, P2-, P+, P-	BATTERY_PAD - 6mm	COM	4
SW-PB	Switch	SW1, SW2, SW3	BUTTON	SW-PB	3
Header 4	Header, 4-Pin	CON2, CON3, CON4, CON5, CON6	CON2	Header 4_1	5
Jumper	Jumper Wire	JP1, JP3	CON2	Jumper	2
OCDS	Header, 4-Pin	CON9	CON4*1	Header 4	1
UART	Header, 4-Pin	CON10	CON4*1	Header 4	1
CMP_Select	Header, 3-Pin	JP2	HDR1X3	Header 3	1
BATTERY	Header, 4-Pin	CON7	HOUSING4MM*2	Header 4_1	1
CHARGER	Header, 4-Pin	CON1	HOUSING4MM*2	Header 4_1	1
LED	Typical RED GaAs LED	LED1, LED2, LED3, LED4	LED_SMD0805	LED1	4
HT45F86x0_Socket	HT45F86x0_DemoMotherboard	MCU_Socket	MCU_Socket_48pin	HT45F86x0_DemoMother	1
100k		NTC	NTC_PAD	Sensor(1)	1
5V	Plug	P10	PIN1	Plug	1
B-	Plug	P6	PIN1	Plug	1
C+	Plug	P13	PIN1	Plug	1
C-	Plug	P14	PIN1	Plug	1
GND	Plug	P8, P9	PIN1	Plug	2
OCP_INT	Plug	P15	PIN1	Plug	1
PB5	Plug	P12	PIN1	Plug	1
PF4	Plug	P11	PIN1	Plug	1
0R	1 Amp Fast Recovery Rectifier	D7	SMC	Diode	1
ER3D-TP	Default Diode	D1, D6	SMC	Diode	2
NC	1 Amp Fast Recovery Rectifier	D11	SMC	Diode	1
DMNH6042SSDQ-13		Q1	SOP 8PIN 150MIL	DMNH6042SSDQ-13	1
DMP6050SSD-13		Q3	SOP 8PIN 150MIL	DMP4025LSD-13	1
HT92122		U1	SOP 8PIN 150MIL 1,	IC 2x4 S	1
HT92632		U2	SOP 8PIN 150MIL 1,	IC 2x4 S	1
2N7002	N-Channel Power MOSFET	Q7	SOT-23	NMOS	1
MMBT3904	NPN General Purpose Amplifier	Q5	SOT-23	NPN	1
SW-PB	Switch	Ca1_SW1	SPST-2_250mil	SW-PB	1
P0706BD	N-Channel Power MOSFET	Q4, Q8	TO252-3	NMOS	2
HOLE		HOLE1, HOLE2, HOLE3, HOLE4	VIA	HOLE	4
Header 4	Header, 4-Pin	CON11	XH2.54mm_4PIN	Header 4	1
Header 5	Header, 5-Pin	CON12	XH2.54mm_5PIN	Header 5	1
Header 6	Header, 6-Pin	CON13	XH2.54mm_6PIN	Header 6	1
Header 7	Header, 7-Pin	CON14	XH2.54mm_7PIN	Header 7	1
Header 8	Header, 8-Pin	CON15	XH2.54mm_8PIN	Header 8	1
Header 9	Header, 9-Pin	CON16	XH2.54mm_9PIN	Header 9	1